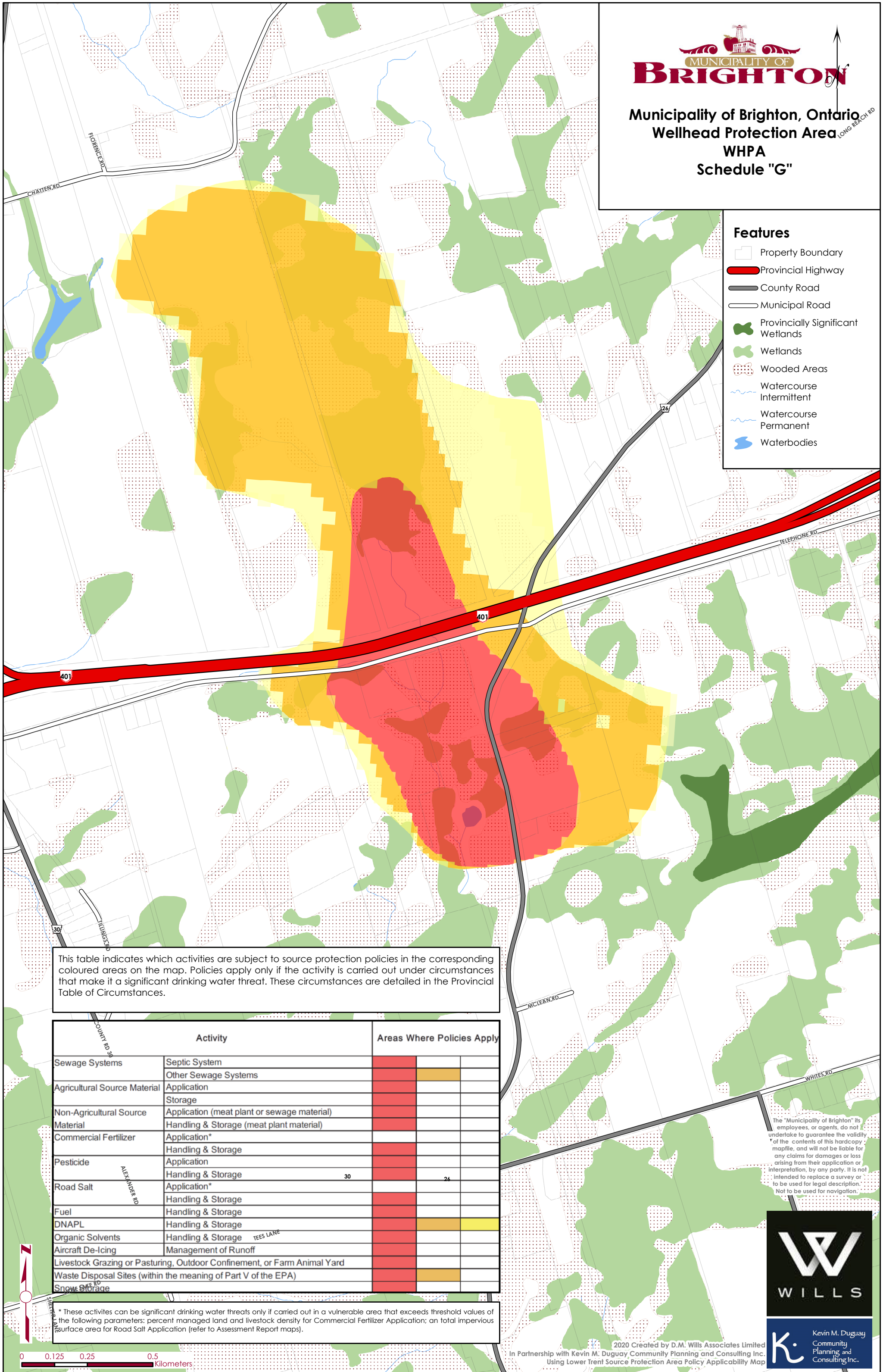


**Municipality of Brighton, Ontario
Wellhead Protection Area
WHPA
Schedule "G"**

- Features**
-  Property Boundary
 -  Provincial Highway
 -  County Road
 -  Municipal Road
 -  Provincially Significant Wetlands
 -  Wetlands
 -  Wooded Areas
 -  Watercourse Intermittent
 -  Watercourse Permanent
 -  Waterbodies



This table indicates which activities are subject to source protection policies in the corresponding coloured areas on the map. Policies apply only if the activity is carried out under circumstances that make it a significant drinking water threat. These circumstances are detailed in the Provincial Table of Circumstances.

Activity		Areas Where Policies Apply		
Sewage Systems	Septic System	Red	Orange	Yellow
	Other Sewage Systems	Red	Orange	Yellow
Agricultural Source Material	Application	Red	Orange	Yellow
	Storage	Red	Orange	Yellow
Non-Agricultural Source Material	Application (meat plant or sewage material)	Red	Orange	Yellow
	Handling & Storage (meat plant material)	Red	Orange	Yellow
Commercial Fertilizer	Application*	Red	Orange	Yellow
	Handling & Storage	Red	Orange	Yellow
Pesticide	Application	Red	Orange	Yellow
	Handling & Storage	Red	Orange	Yellow
Road Salt	Application*	Red	Orange	Yellow
	Handling & Storage	Red	Orange	Yellow
Fuel	Handling & Storage	Red	Orange	Yellow
	Handling & Storage	Red	Orange	Yellow
Organic Solvents	Handling & Storage	Red	Orange	Yellow
	Management of Runoff	Red	Orange	Yellow
Livestock Grazing or Pasturing, Outdoor Confinement, or Farm Animal Yard	Handling & Storage	Red	Orange	Yellow
	Management of Runoff	Red	Orange	Yellow
Waste Disposal Sites (within the meaning of Part V of the EPA)	Application	Red	Orange	Yellow
	Storage	Red	Orange	Yellow

* These activities can be significant drinking water threats only if carried out in a vulnerable area that exceeds threshold values of the following parameters: percent managed land and livestock density for Commercial Fertilizer Application; an total impervious surface area for Road Salt Application (refer to Assessment Report maps).

The "Municipality of Brighton" its employees, or agents, do not undertake to guarantee the validity of the contents of this hardcopy mapfile, and will not be liable for any claims for damages or loss arising from their application or interpretation, by any party. It is not intended to replace a survey or to be used for legal description. Not to be used for navigation.



Kevin M. Duguay
Community Planning and Consulting Inc.

